

HerdMASTER

Crush Side Recording Utility

November 2008

Table of Contents

HerdMASTER Crush Side Recording Utility	2
Overview	2
Opening CSRU for the First Time	2
Setting up Trait and Treatment Templates.....	3
CRSU Configuration.....	6
Changing the Screen Colours to improve contrast	7
Connecting to RFID and Scale Devices	8
Scanning Animals	10
Displayed Animal Information	12
Customising Your Display.....	13
Recording New Information.....	15
Scanning a Session (Scanning from a File)	19
Appendix A – Import Session File Format	22

HerdMASTER Crush Side Recording Utility

Overview

The HerdMASTER Crush Side Recording Utility (CSRU) has been designed to allow users who have a laptop at the yards, to not only view previous information but also record new information against animals as they are scanned in the race.

You will need an RFID reader and optionally Electronic scales to be connected to the PC at the yards, Saltbush's unique Plug and Play system will identify the type of device connected to the system and establish a connection with it. There is also a manual device interface for custom situations or foreign devices.

Alternatively you can load a session of scanned animals from a File. This allows users to import animals and record the same details against them without having a PC present at the yards.

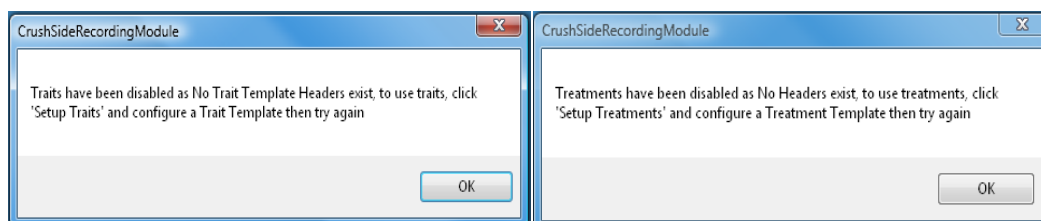
As you scan a tag the scanned animals previous weights, traits, procedures, pretest info, and basic details will be populated on the screen. You can then record new weights, traits, procedures, pretests as well as update basic animal info such as sex or date of birth. Using the Trait and Procedure Template's users can record a virtually any combination of Traits and Procedures against each animal. Also, calculated information such as Average Daily Weight Gain (ADWG) and estimated ADWG is displayed for each animal and each animal's weight to assist in drafting and performance monitoring,

Sessions can be saved to allow users to record a single session over multiple recording periods, even if they have to shut down the computer due to a low battery to move between yards or any other situation. There is a viewable overview of the unique animals and their weights in the order they were scanned.

To suggest new features or for assistance with the Crush Side Recording Utility contact HerdMASTER Support on 1-800-111-637.

Opening CSRU for the First Time

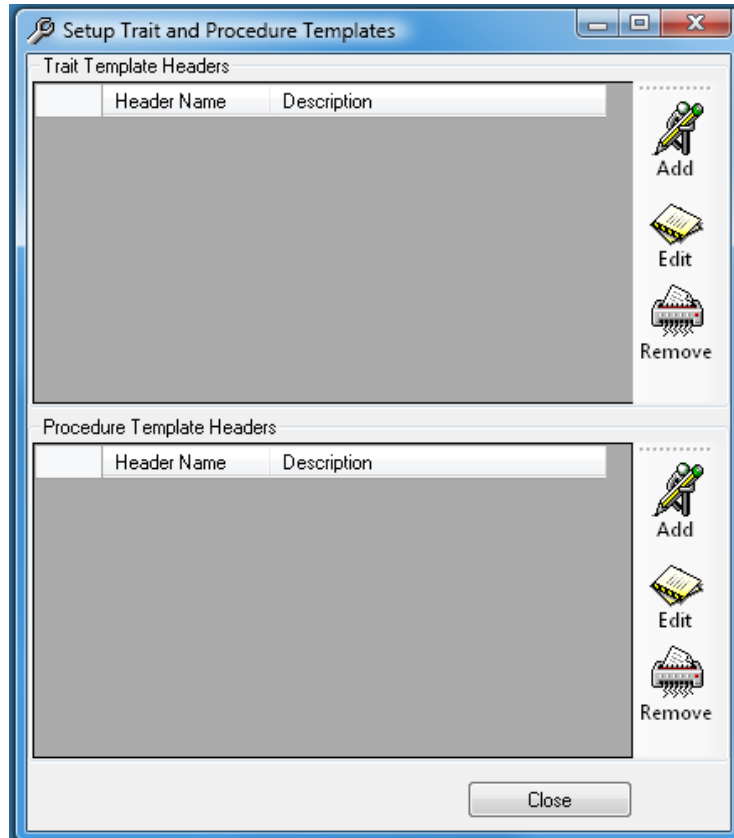
When you first open the CSRU you will not have any templates setup for recording groups of Traits and Templates. You will receive two messages indicating this. If you do not wish to record Traits or Treatments then you can ignore these messages and continue to Configuring your devices.



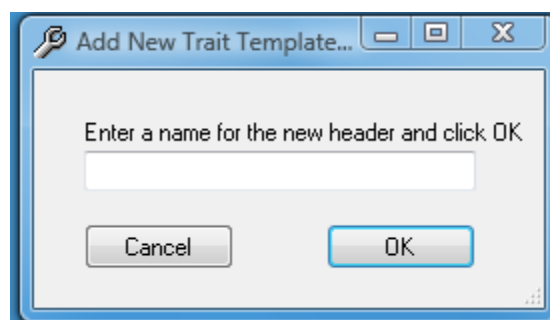
Setting up Trait and Treatment Templates



To Setup Trait or Procedure Templates click the Setup Traits or Setup Procedures button. You will be displayed with a Setup Template Headers screen.



Click the **Add** button that corresponds to the type of Template you wish to create and enter a name for the new Header and click OK.



You will be taken to the setup Trait or Treatment screen depending on which type you are creating.

You can edit an existing template or remove it by selecting the template you wish to edit or remove and clicking the appropriate button.

The Setup Trait Template screen allows you to configure the Traits you will be recording on each animal as they are scanned in the race.

Treatment Templates allow users to store groups of procedures to be allocated to each animal. To edit contents using the 'Add' and 'Details' options below

Add Trait to Selected Header

Animal Trait: RMP

Header Name/Desc

Name: SampleTraitTemplate

Description:

Header Trait Details

	Trait Code	Default Value	Note
	IMF	5	
	P8F	5	
	RMP	5	

Choose a Trait to Add to the template and click 'Add Selected Trait to Template' you can then add a default value and or note if you like. The default value will be recorded against each animal unless you change it on an individual animal basis as they are scanned.

The Header Name/Desc will be visible on the main screen and are there to identify the selected grouping of Traits you have selected. Setting the name to something that describes the grouping of traits will help you locate the template later when you are recording animals.

Traits can only appear once per header, and can be removed by selecting the row in the table and clicking the 'Remove Selected Row' button.

Once you are done making changes click 'Save and Close' to update the template and close the details screen. You will be returned to the template header setup screen.

The Setup Procedure Template screen is very similar to the Setup Trait Templates screen. Here you can add procedures to the template and specify a batch and dose if applicable.

Procedure Templates allow users to store groups of procedures to be allocated to each inducted animal. To edit contents using the 'Add' and 'Details' options below

Add Procedure to Selected Header

Procedure Type: MISC Procedure Code: INJ Batch Number: TEST1 Add Selected Procedure/Batch

Header Name/Desc
Name: SampleProcTemplate Description:

Header Treatment Details

	Procedure Code	Batch	Units	Note
	FERT	TESTD	25	
	INJ	TEST1	10	

Remove Selected Row Cancel Save and Close

First choose a Procedure Type, this will populate the Procedure Code drop down list with procedures of that type. When you select a Procedure Code any batches for that procedure will be displayed in the Batch drop down list. Once you have the Procedure Code and optionally Batch selected click 'Add Selected Procedure/Batch' to add it to the template.

Once the Procedure has been added to the table at the bottom of the screen, you can add a note and or dose to the procedure. If a Batch has been specified the Dose will be automatically subtracted from the Quantity Left for that batch.

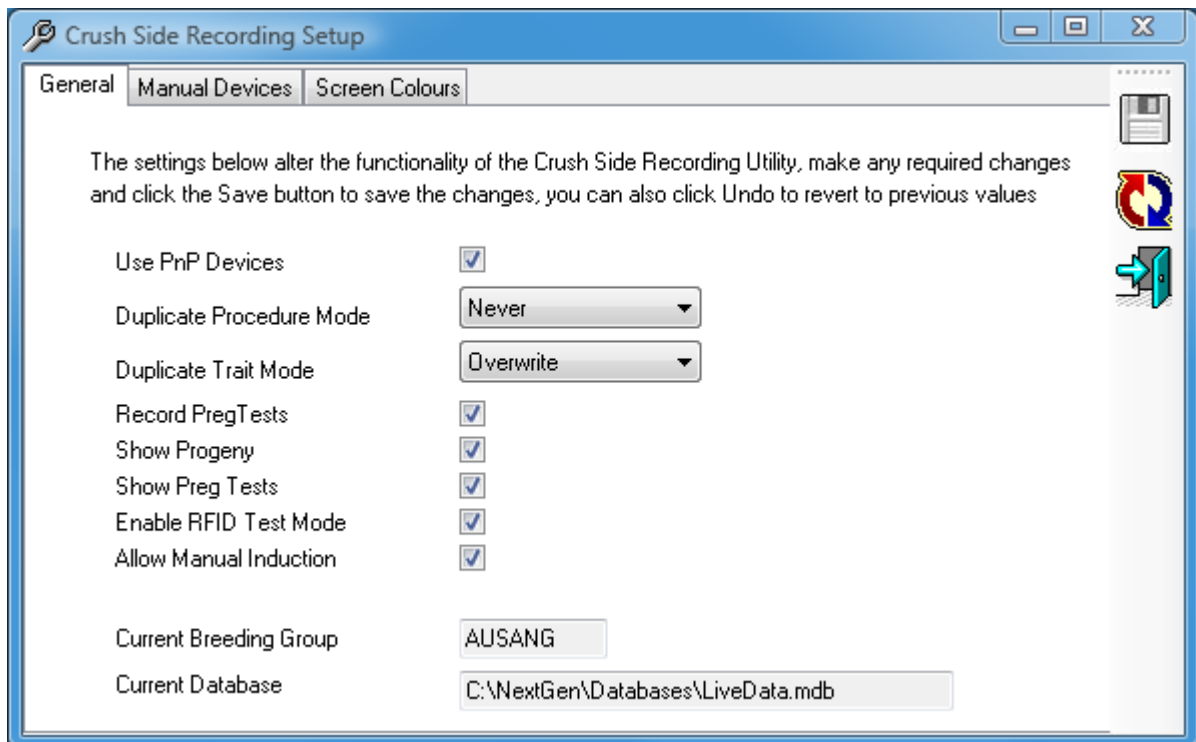
The Header Name/Desc will be visible on the main screen and are there to identify the selected grouping of Procedures you have selected. Setting the name to something that describes the grouping of procedures will help you locate the template later when you are recording animals.

Once you are done making changes click 'Save and Close' to update the template and close the details screen. You will be returned to the template header setup screen.

Once you have completed your Template configuration you can configure your functional settings, access the settings at any time by clicking the  setup button.

CRSU Configuration

The Setup Screen has several options that change the way Animal Recording functions.



Use PnP Devices: Either enables or disables the Saltbush Plug and Play system. If this is unchecked during a session, you will need to close and reopen the main screen for the change to take effect. See the Connecting to RFID and scale devices section for more information.

Duplicate Procedure Mode: When recording procedures there may be a situation where the same procedure has already been recorded against an animal on the same day. If these situations users can have the program prompt them to see if they wish to add a second identical procedure or they can 'Always' add the duplicate procedure or they can 'Never' add duplicate procedures.

Record Preg Tests: Either shows or hides the Preg test recording functionality of the screen. If this is unchecked you will not see the previous preg test info nor will you be able to record new preg test info.

Show Progeny displays an additional details table which shows the current animals progeny.

Show Preg Tests: Displays a details table that shows Pregtest history for the current animal.

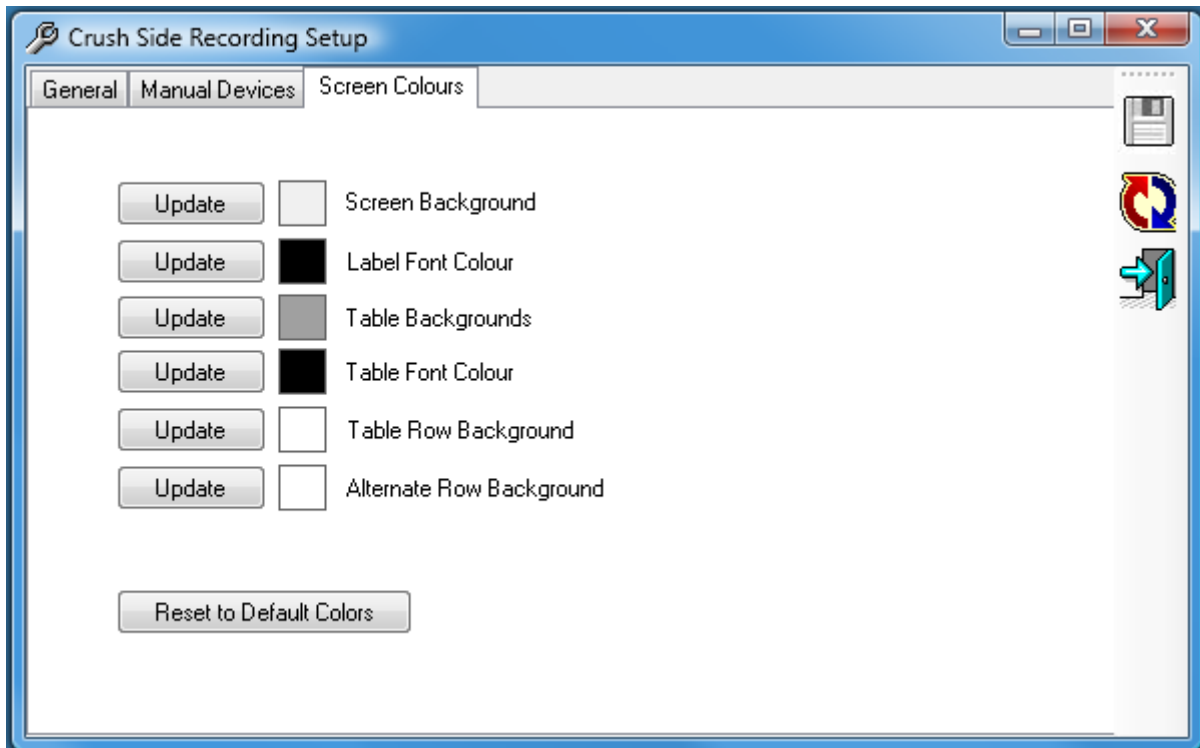
Enable RFID Test Mode: Is a support function that may assist in troubleshooting device connections.

Allow Manual Induction: When enabled shows an extra button that the top of the main screen that allows users to manually key in an EID then the program imitates a scan event as if you just scanned the tag you typed in. Useful if you know an EID but do not have the tag.

The current Database and Breeding Group are there for information only, they cannot be changed from this screen.

Changing the Screen Colours to improve contrast

Users can adjust the colours of the Crush Side Recorder screen to allow for maximum visibility in situations where contrast is required to clearly see screen details, such as at the yards in direct sun light.



The CRSU lets users change:

Background colour: Which consists of the areas of the screen where there are no objects or controls

Label Font Colour: Which is the font used for the labels that identify different components of the screen.

Table backgrounds: The background colour of data tables behind any visible rows.

Table Font Colour: The font colour visible for data in the tables.

Table Row Background: The background of Rows in data tables.

Alternate Row Background: The background of every other row in each grid.

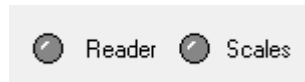
When you have finished making changes you **MUST** click the Save button to save changes before closing the screen. If you need to undo any changes made since the last Save, click the Undo button. To close the screen click the X or the close button.

Once you have completed your Template configuration it is time to connect to the RFID Reader and optionally scale device(s) to your PC.

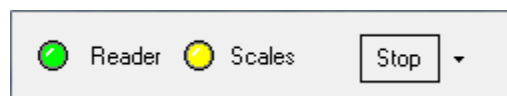
Connecting to RFID and Scale Devices


HerdMASTER CSRU utilised the Saltbush Plug and Play device system making it as simple as plugging your device in and clicking Start. It is important to note for Bluetooth and customised systems that the plug and play system may not function correctly. In these situations users can use the Manual Device option to specify port settings to connect to devices.

In the top right hand corner of the main screen you can find the device connection options.

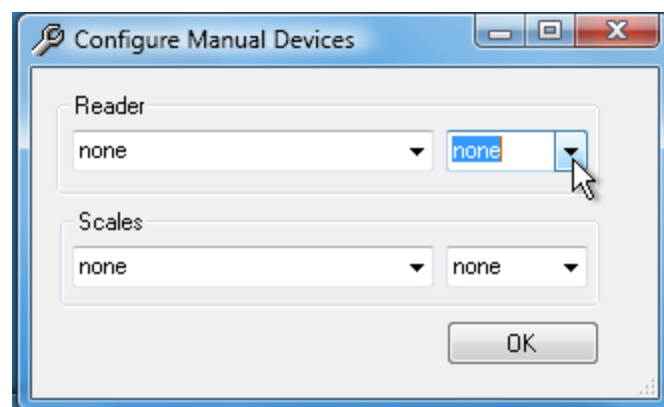


When you first start up the screen the reader and scale LED's will appear in grey to indicate they are NOT connected. When using the plug and play setting first ensure that you have connected your device(s) and click the 'Start' button. The LED's will flash yellow indicating they are communicating with the device attempting to establish the port settings, when the device has been successfully connected the LED's will turn green and or flashing green and yellow. Once the LED's are green or flashing green and yellow you are connected to your device and you can begin to scan your first animal.



If you are using the manual device setting you will first need to configure your device(s), then connect to them. Click the  button to select the devices you are using and the port they are connected to.

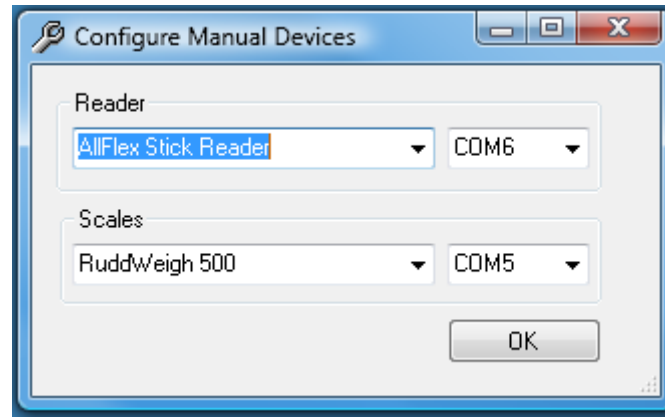
Before you plug in your device(s) click the configure button and make a note of the ports available in either drop down list.



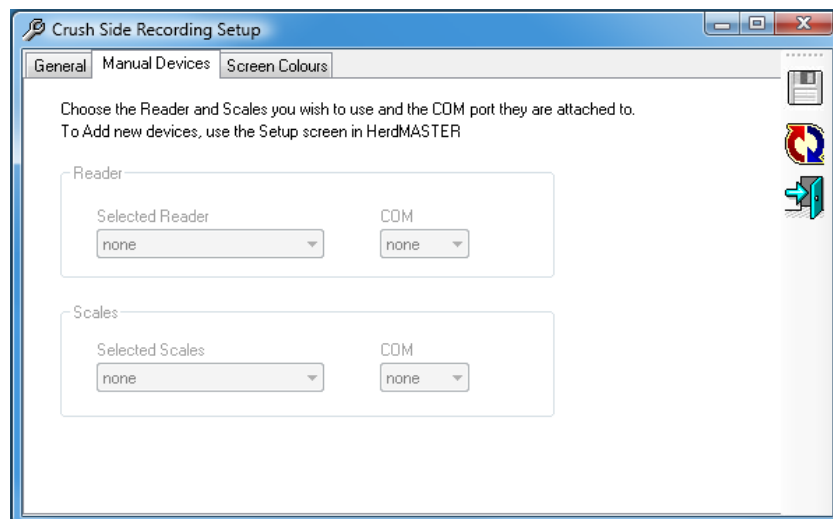
Close the screen and plug in the reader device, once the device has been recognised by windows (a notification sound will be played) click the configure button again, this time select the reader you have connected to your computer and select the port that was not available in the list since the first time you checked. This will be the port that the device has connected to. Once you have selected the device and the port click OK to return to the main screen.

If you have a scale device you wish to connect, plug it in and wait for it to be recognised by windows, then click the configure button again. Select the scale device and choose the new port in the list since the first time you checked, and not the same as the reader port.

If a new port is not available then the device has not been recognised by windows, contact Saltbush or the device manufacturer for assistance with diagnosing the connectivity problem.



Or



If you need to add new devices or configure a device's properties you can do this in HerdMASTER with the Setup Devices screen.

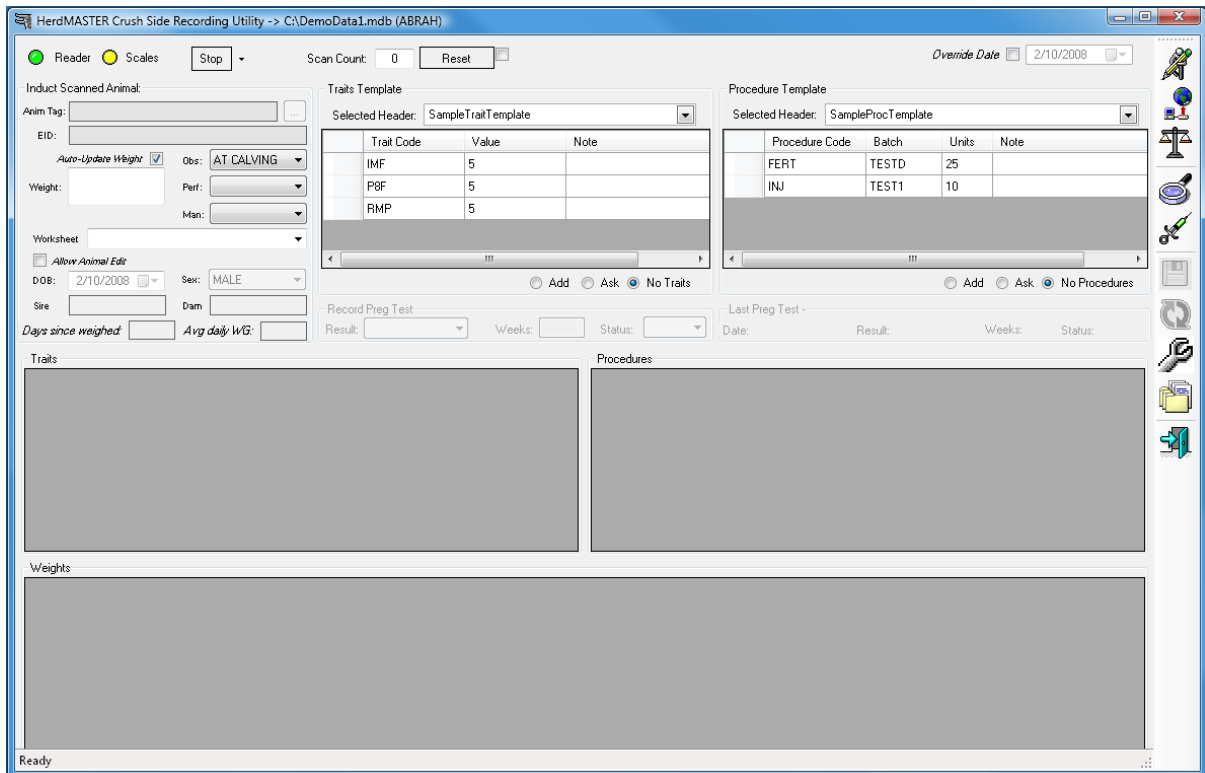
Otherwise you can now click Start to connect to the selected devices. You should get a green LED for each of the devices you plugged in. I.E. if you did not plug in a scale device you will only get a green LED for the reader.



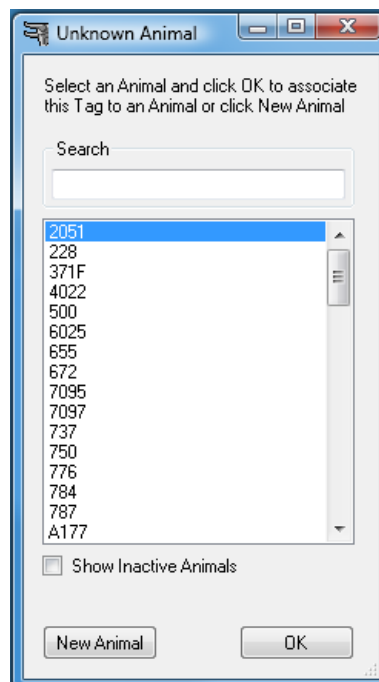
Once you have connected to your device you can begin to scan your first animal.

Scanning Animals

As you scan animals with your connected RFID reader their details will be displayed on the screen.



When a scan takes place HerdMASTER CSRU attempts to locate the animal associated with the EID that was scanned, if there is no animal associated with the scanned tag you will be prompted to select an animal that the tag belongs to.



Select the animal that the tag belongs to and click OK to create the association and return to the main screen.

If the animal does not exist in the database you can click the 'New Animal' button to create a new animal.

Add New Animal

EID
982 000004619606

Animal Tag
[Empty]

Sex
MALE

DOB
Thursday, 2 October 2008

Breed Code
ABRAH

Cancel OK

When creating a new animal you must specify a Unique Tag, Sex, DOB, and Breed Code. Once this information has been entered click OK to add the new animal and you will be taken back to the main screen.

HerdMASTER Crush Side Recording Utility -> C:\DemoData1.mdb (ABRAH)

Reader Scales Stop Scan Count: 1 Reset Override Date: 2/10/2008

Instruct Scanned Animal: Anim Tag: X147 EID: 982 000004619606

Auto-Update Weight [checked] Obs: MA Perf: 3 Weight: 880 Est ADWG: 0.1 Man: 5

Worksheet: NewWorksheet1 Allow Animal Edit [unchecked] DOB: 4/06/1988 Sex: MALE Site: P183 Dam: R101

Days since weighed: 7484 Avg daily WG: 0.1

Traits Template Selected Header: HeifersT1

Trait Code	Value	Note
BCS	2	
FAT	3	
HH	4	
P8F	2	

Procedure Template Selected Header: HeifersTr1

Procedure Code	Batch	Units	Note
INJ	TESTNOINV	20	
FERT	TESTD	10	

Traits

Trait Date	Trait Code	Value	Man Group	Obs Code
2/10/2008	BCS	2	5	MA
2/10/2008	FAT	3	5	MA
2/10/2008	HH	4	5	MA
2/10/2008	P8F	2	5	MA
2/10/2008	REA	3	5	MA
2/10/2008	RMP	4	5	MA

Procedures

Proc Date	Proc Code	Batch	Dose	Type
2/10/2008	INJ	TESTNOINV	20	P
2/10/2008	FERT	TESTD	10	P

Weights

Weigh Date	Weight	ManGroup	Obs Code	Perf Group	Days Since Last Weighed	Days Since First Weighed	WG Since Last Weight	WG Since First Weight	ADWG Since Last Weight	ADWG Since First Weight
5/04/1988	108		B	1						
15/10/1988	705		W2	22	192	192	597	597	3.11	3.11
2/10/2008	880	5	MA	3	7292	7484	175	772	0.02	0.1

CAPTURED: EID(982 000004619606)

Once HerdMASTER CSRU knows which animal you just scanned it will load that animal's information on the screen.

Displayed Animal Information

The Animal Tag and EID are visible in the top right hand corner of the screen, these fields are read only. The Weight field will contain the weight if a weight has occurred on the recording date otherwise this will be blank. The NID (CCIA in Canada) is displayed below the EID. Users are able to modify this and the changes will be saved. If you are using a Canadian breed code this field will fill automatically with the current EID unless there is already a value in this field.

The animals DOB, Sex, Sire and Dam are displayed below the weight textbox. You can edit these fields by ticking the 'Allow Animal Edit' checkbox and specifying new values. To set or change a Sire or Dam make sure the 'Allow Animal Edit' box is ticked and then click the field you want to update (either Sire or Dam). The 'Allow Animal Edit' checkbox will un-tick itself when you save or scan the next animal.

The Days since weighed displays the number of Days since the animals last weight, the ADWG is the animal's lifetime average daily weight gain. Both Fields are displayed for information purposes only they cannot be modified.

Any Traits will be displayed in the Traits table, by default this is sorted by Date in ascending order, you can change the sort order by clicking any of the column headings, this table is read-only you cannot modify the contents of this table on this screen.

Similarly any Procedures will be displayed in the procedures table. By default this is sorted by Date in ascending order, you can change the sort order by clicking any of the column headings, this table is read-only you cannot modify the contents of this table on this screen.

Weights are also displayed in the weights table, by default this is sorted by Date in ascending order. The weights Gain and Average Daily weight gain can be viewed for each weight since the last weight and the first weight. You can change the sort order by clicking any of the column headings, this table is read-only you cannot modify the contents of this table on this screen.


Progeny can be displayed in the left details container if you select this options in the CSRU setup. by default this is sorted by Date in ascending order, you can change the sort order by clicking any of the column headings, this table is read-only you cannot modify the contents of this table on this screen.

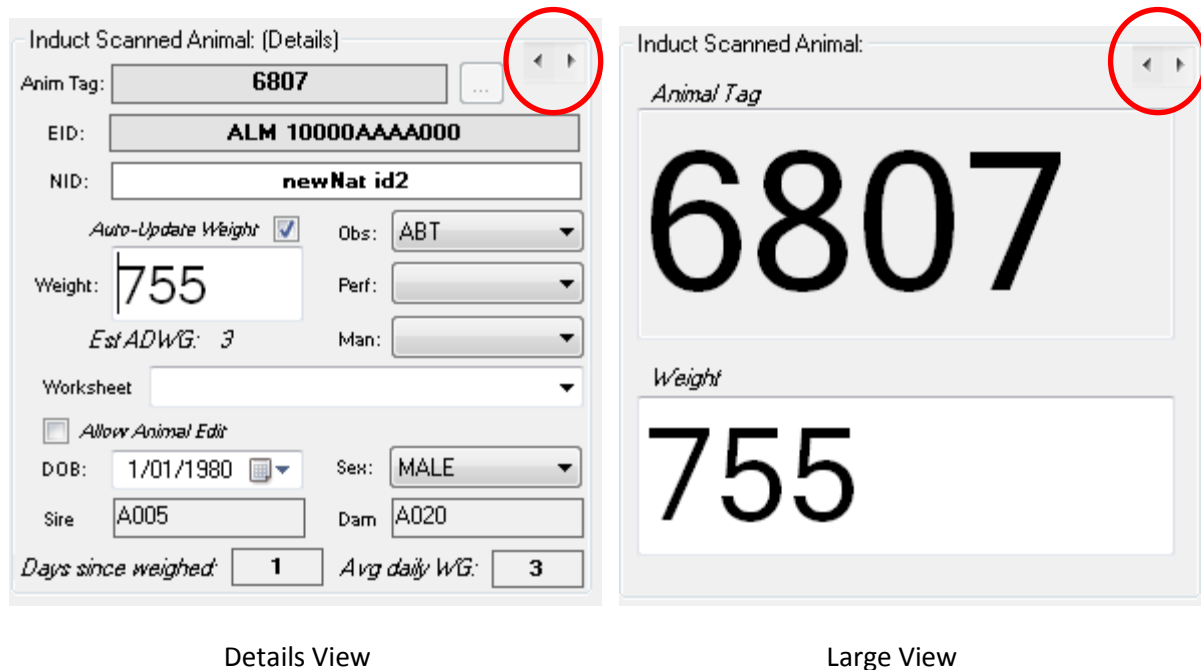
If you have the Preg Test option enabled you will be able to see the last preg test for female animals on the Last Preg Test area. If the animal is not female this will be disabled, if you do not have the Record Preg test option enabled you will not be able to see this area.

To view an animals entire Pregtest history you need to enable the show Pregtests option in the CSRU Setup, this will show the Preg Tests details table. By default this is sorted by Date in ascending order, you can change the sort order by clicking any of the column headings, this table is read-only you cannot modify the contents of this table on this screen.

Customising Your Display

The CSRU allows you to change various aspects of the display to make it easier for you to see the information you want or need to see. There are two main features that can be used to make your job easier, the Large Display Panel and moveable detail tables.

The Large display panel is a view option that shows the Animal Tag and Weight in a large and easy to see font. You can toggle between the Large View and the Details View by clicking the  buttons located in the top right hand corner of the Animal Details panel.



While you are recording you can enter weights into either the large view or the details view and they will be recorded. The Animal Tag field font size will automatically reduce depending on the length of the current tag. The maximum characters that can be displayed at once is 12.

Moveable Detail Tables allows you to reorder and move detail tables (Traits, Procedures, Weights and Progeny) from one container to another. The latest release of the CSRU has the ability to view Progeny, this options is disabled by default and must be enabled in the Site Options in order to customise your detail tables.

We use a Drag and Drop method to move tables from one container to another. To Move a details table you simple left-click and drag the table header you wish to move over the container you wish to move it to and release your mouse.

A container must contain at least one details table. If there is only one details table in a container the ability to move that table is disabled.

There are three containers (right, left, and bottom) that you can move your data tables between. The following demonstrates moving the Progeny table from the left container to the right container. This would allow a user to view Traits, Progeny and Weights simultaneously.

View before Progeny table move

Traits					Progeny				
Trait Date	Trait Code	Value	Man Group	Q	Proc Date	Proc Code	Batch	Dose	T
5/12/2008	10F	5		AE	5/12/2008	3 DAY	DB-01900	10	P
5/12/2008	12F	5		AE					

Weights									
Weigh Date	Weight	ManGroup	Obs Code	Perf Group	Days Since Last Weighed	Days Since First Weighed	WG Since Last Weight	WG Since First Weight	Ad La
4/12/2008	752		ABT						
5/12/2008	755		ABT		1	1	3	3	3

- 1) Left click and drag (Hold the left mouse button down) the table you want to move (Progeny)

Traits		Progeny	
AnimalGUID	Sex Cod		
854E	MALE		
DATE	MALE		
RACH	FEMALE		

- 2) Move the mouse to the desired container (right) and release the mouse button.

Procedures	
Proc Date	
5/12/2008	

- 3) The Progeny Table will be added to the right container and you will now be able to view the Traits, Progeny and Weights tables simultaneously.

View After the Progeny Table Move

Traits					Procedures					Progeny									
Trait Date	Trait Code	Value	Man Group	Q	AnimalGUID	Sex Code	Date of Birth	Fate Code	S	Weigh Date	Weight	ManGroup	Obs Code	Perf Group	Days Since Last Weighed	Days Since First Weighed	WG Since Last Weight	WG Since First Weight	Ad La
5/12/2008	10F	5		AE	854E	MALE		P		4/12/2008	752		ABT						
5/12/2008	12F	5		AE	DATE	MALE	2/02/1993	P		5/12/2008	755		ABT		1	1	3	3	3
					RACH	FEMALE	1/01/1992	P											

Recording New Information

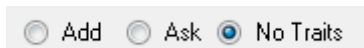
Weight: When an animal has been scanned if it was already weighed on the recording date this weight will be displayed in the weight textbox, otherwise you can manually enter a weight here or weigh using a scale connected to the computer and it should transfer to this textbox. The Obs Code, Perf Group and Man Group specified next to the weight text box will be recorded with the weight. If this box is left blank no weight will be recorded.

NID (CCIA in Canada): This is the animals National ID or CCIA number. You can add or change an animal's NID or CCIA by overwriting the text in this field. Note: This field will be filled with the current EID automatically if its empty when an animals is scanned.

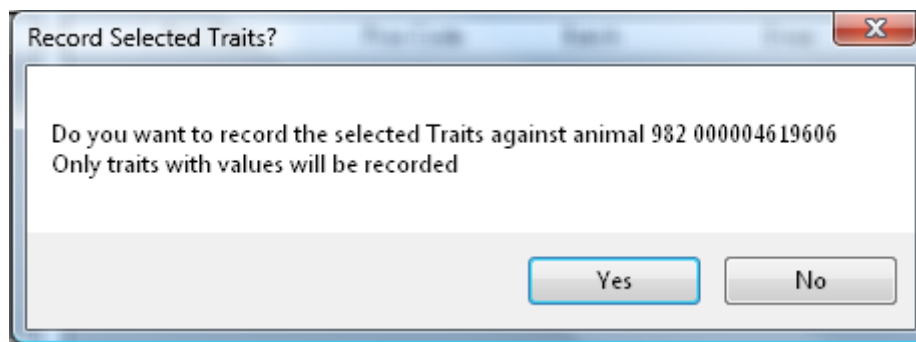
Worksheet: If you want to add animals to a worksheet as they are scanned, choose a worksheet from the drop down list, or type in the name of a new worksheet. This will not clear as you scan additional animals unless you change it.

Sex, DOB, Sire and Dam: You can modify the Sex, DOB, Sire and/or Dam of animals as they are scanned by clicking the 'Allow Animal Edit' checkbox and modifying the respective fields. To set a new Sire or Dam, make sure the checkbox is ticked and then left click the respective field. When the next animal is scanned the checkbox will automatically uncheck itself.

Traits: If you have a Trait Template selected in the Selected Header Drop Down List you can record the Traits available in that template. There are three options associated with recording Traits.



Add will add any Trait that has a value in the value column, Ask will prompt you for each animal if you want to Add Traits to the animal. No Traits will ignore all traits and will not record.



NOTE: if a Trait does not have a value in the Value column it will not be recorded.

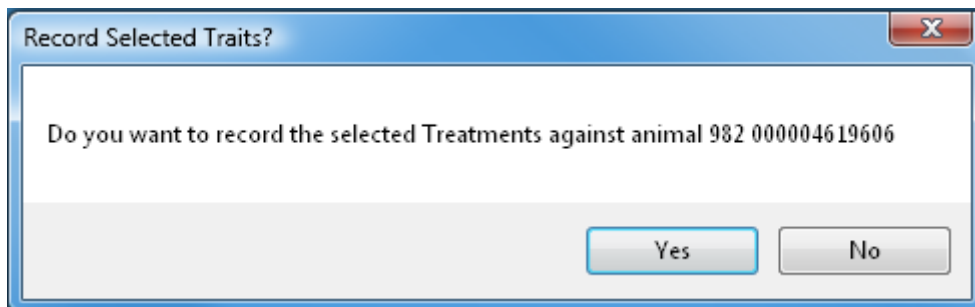
If the animal already has the same Trait Recorded on the recording date the value will be updated, ignored or CSRU will prompt you. The action CSRU takes is specified in the Setup option Duplicate Trait Mode:



Procedures: If you have a Procedure Template selected in the Selected Header Drop Down List you can record the procedures listed in the template table. Similarly to the Trait Template there are three options associated with recording Procedure Templates.

Add Ask No Procedures

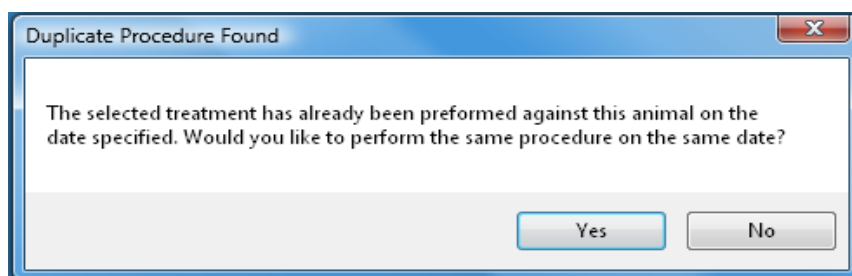
Add will add all Procedures in the template table, Ask will prompt you to see if HerdMASTER CSRU should record all procedures, and No Procedures will ignore all rows and not record any procedures.



Unlike the trait template if you choose to record procedures ALL procedures in the list will be recorded even if the dose is 0.

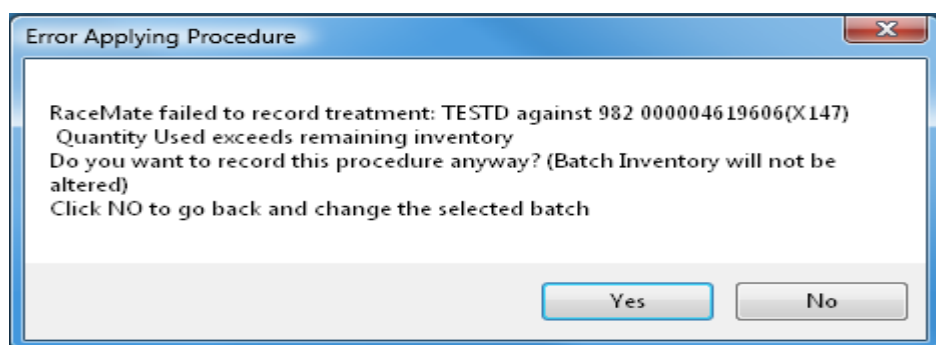
If the animal already has a procedure recorded on the same day as the one you are adding, you will by default be prompted to see if you wish to record this procedure again. There is a setting in the settings screen that dictated HerdMASTER's behaviour in this circumstance. If you change the Duplicate Procedure Mode to 'Always' or 'Never' you will not be prompted in these cases.

Duplicate Procedure Mode



If you have batches specified in your template and you have chosen to Maintain Inventory, HerdMASTER CSRU will automatically deduct the dose from the specified batches Quantity Left and add it to the Quantity Used.

If your batch does not have enough units remaining or it has passed its expiry date you will receive a validation warning indicating the problem and asking if you wish to record the procedure anyway:



If you have Preg Tests enabled you can record basic pretest information. Choose a Result either positive or negative, if Positive, then supply a weeks pregnant, and then an In-Calf status either Wet or Dry.

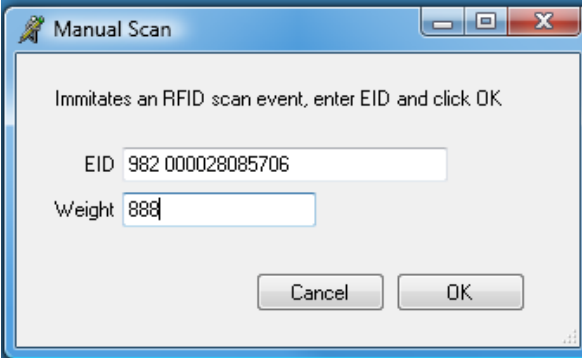
Record Preg Test	Last Preg Test -					
Result: Positive	Weeks: 8	Status: Wet	Date: 2/10/2008	Result: Positive	Weeks: 5	Status: WET

Once you have entered all the information into the main screen you have two choices, you can simply scan the next animal or you can manually Save by clicking the Save button first then scan the new animal.

In some cases when speed is not crucial it may be better to first Save the animal, in case there are any recording issues that require you to change values and retry, however if you are simply recording weights you may simply choose to scan the next animal, either way an animal is always saved before the next animal is loaded.

If the Save button is disabled this means there is no new or updated information to record. The Save button will become enabled if/when you change a field that will cause the animal to need to be saved.

There may be a situation where you are required to Manually Scan an animal. In these cases you need to ensure you have the Allow Manual Induction setup option checked and click the Add button at the top of the buttons on the right hand side of the screen.



A dialog box titled "Manual Scan" with a blue border and standard Windows window controls. The text inside reads: "Immitates an RFID scan event, enter EID and click OK". Below this text are two input fields: "EID" containing the value "982 000028085706" and "Weight" containing the value "888". At the bottom of the dialog are two buttons: "Cancel" and "OK".

Enter the EID you wish to scan and a weight if applicable, and click OK, HerdMASTER CSRU will imitate a scan of the specified EID as if you had just scanned it. You can proceed to record new information as if it were any other scanned animal.



If you have scales connected and they are not transmitting weights you may need to prompt for them by clicking the Get Weight Button.



If you are using the Manual Devices option you may also need to prompt for a tag as it is scanned, click the Get EID button to get the last EID scanned with your reader.



The Undo button will discard any new information you have entered and reload the current animals details.

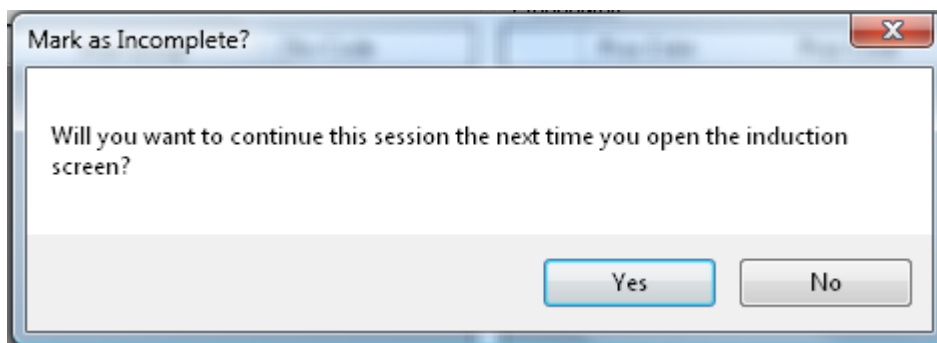


The View Current Session button will display a window with a unique list of Animals and their weights if any.

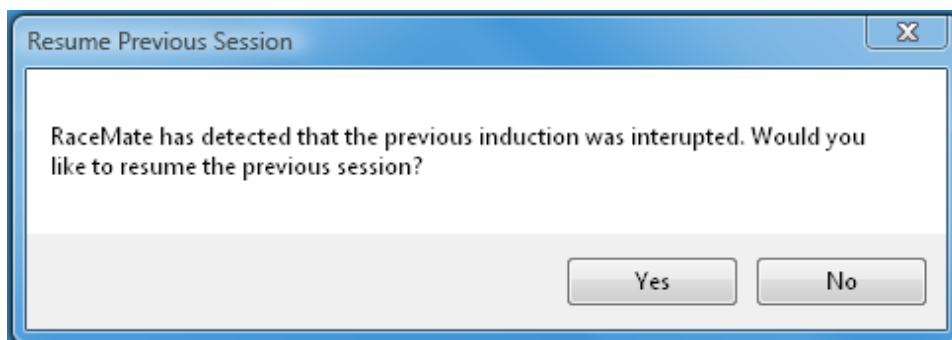
RFID	VID	Weight
982 0100000162...	2051	987
982 0000046196...	X147	890
982 0000280857...	X37R	1024
982 0000867227...	228	1180
982 0000196064...	371F	1112
982 0000867230...	4022	876
982 0000050644...	500	1022
982 0000867229...	6025	976

Unique Tag Count: 8

When closing the main screen you will be prompted to ask if you would like to continue this session if you choose yes, the Session will be saved so the next time you open HerdMASTER CSRU it will load the last scanned animal as if you n ever closed it. If your computer dies while in the middle of a session, you will also be prompted with the 'Resume Previous Session' screen the next time you start HerdMASTER CSRU.




To reopen a saved session, click Yes to the prompt you receive when starting HerdMASTER CSRU.



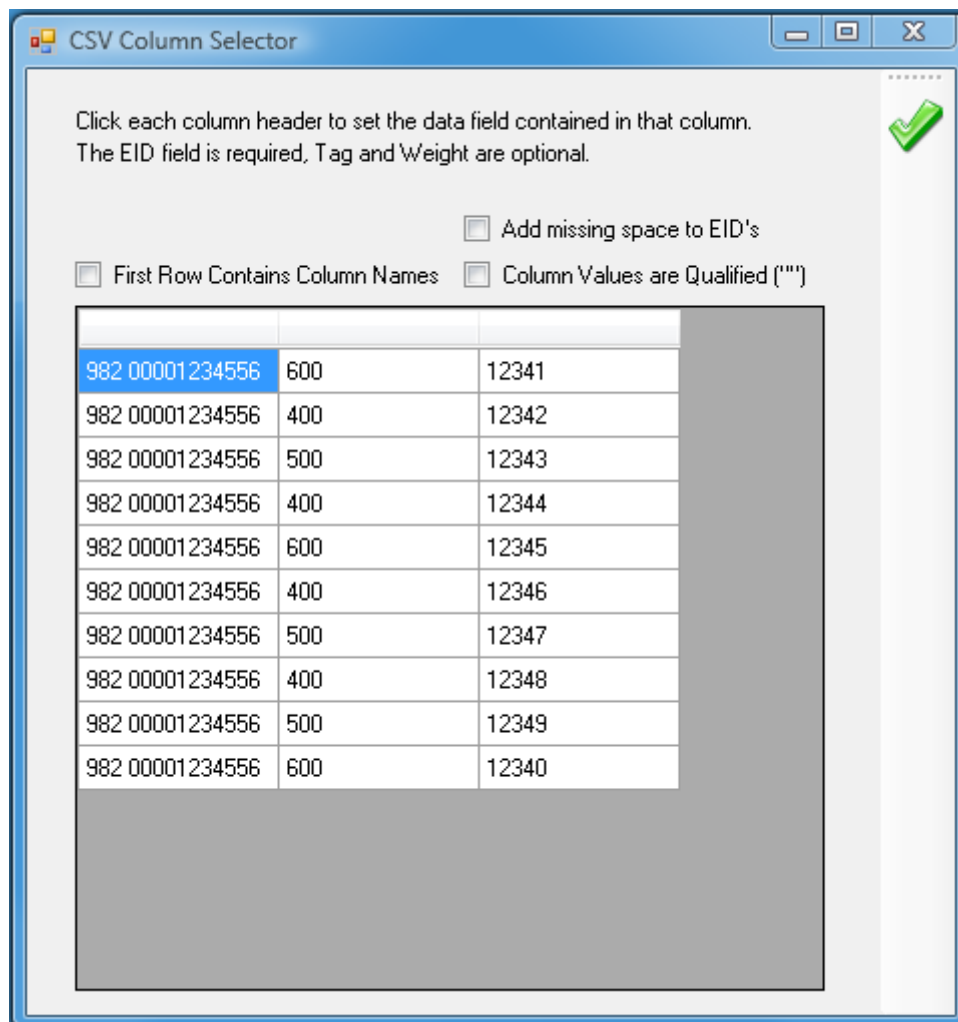
Scanning a Session (Scanning from a File)

There may be situations where it is not possible to have a PC at the yards, however provided you use an RFID reader you can still record information into HerdMASTER using the Crush Side Recorder when you return to your PC.

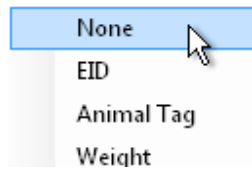
You will need to use the software that came with your reader to extract the session (list of EID's) to an export file. The file needs to contain a list of EID's, in addition it can also handle Animal Tags and Weights in a CSV format. For more information see Appendix A Import File Specifications.

To import from a Session File click the  Import Session button you will be able to select a file that contains the list of EID's that were scanned. When you click the Import Session button, any current session information will be lost, and a new session will begin, ensure you have saved all information in the current session before you begin (if applicable).

Once you select a file to import you will be taken to the CSV Column Selector:



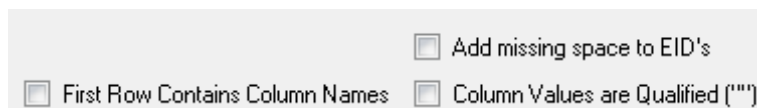
By right-clicking a column header or column you can select the Data contained within that column.



Your EID is the 16 digit number that the reader identifies when scanning animals. If you have an animal tag in the file you can choose the column that contains the animal tag, and if weights are included in the file you can choose Weight for that column. Once you have selected your columns the type of information within each column is displayed in the column header(s).

EID	Animal Tag	Weight
0000000000000001	005D	100


The Column Selector will check the import file for text qualifiers, missing spaces in the EID column and a column headers row, if the file contains any of these the respective checkbox will be checked. For more information Appendix A Import File Specifications.



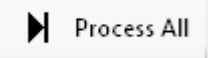
When you have selected the data contained in each available column you can save and close the column selector. You will be returned to the main screen and there will be new buttons at the top of the window.

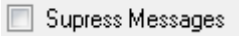


If the Import File Name is green this means the file was successfully loaded. Red indicates the file failed to load, if you get a Red background here contact Saltbush or check Appendix A for more information about the Import File Format. To change the Import file or its properties click the button next to the Import File Name box.

You will have a Total Animals textbox and a Scan Count textbox indicating the number of EID's in the Import File and the current animal respectively. When the main form reloads from the column selector it loads ("scans") the first EID in the Session File. At this point the scan count "1" to indicate you are viewing the first animal in the session file. You can now make changes to the induction screen as if you were in the yards and when you are ready to "scan" the next animal you simply click . You can continue in this fashion to imitate scan events and progress through the session file, changing the information for each animal like its weight or dose if you recorded it while you were scanning the session at the crush. The session will (provided it has not been altered) move through the animal in the same order they were scanned.

If you do not wish to, or do not need to change the recorded information between “scans” you have

the option of clicking  this option will proceed to scan the rest of the animals in the session with the currently selected options (eg traits, procedures worksheet etc).

Before you choose to ‘Process All’ you can select the  checkbox, this will attempt to minimise the amount of interruptions during the import. If you check Suppress Messages and click Process (depending on your current Site Options and currently selected trait and procedure modes) you will be prompted regarding the following settings before the process beings:

1. If you have ‘Ask’ selected for Trait Template Mode
2. If you have ‘Ask’ selected for Procedure Template Mode
3. If you have ‘Prompt’ selected as Duplicate Trait Mode (Site Options)
4. If you have ‘Prompt’ selected as Duplicate Treatment Mode (Site Options)

When the process is finished your site options and trait/procedure modes will return to their original selections.

If you choose not to ‘Suppress Messages’ you will be prompted every time the program requires user intervention.

‘Suppress Messages’ will not suppress validation warnings. In the event you receive a validation warning during the process you will be prompted to pause the import allowing you to correct the error. Once the validation warning has been rectified you can click Process All to continue the import.

When importing from a session file you cannot add a manual scan. You must also close the Crush Side Recorder and re-open to start a normal (PC at crush side) session.

The Import Session works in the same manner as a normal operation regarding allocating EID’s to Animal Tags. If you don’t have an Animal Tag column in the import file you will be prompted to select an Animal Tag for any EID that is not already associated with an animal. If you do supply an Animal Tag column, the program will automatically associate the EID with the corresponding Animal Tag. Before the association occurs animals are checked to make sure the EID does not match another animal and the Animal Tag does not already have another EID associated. In the case either of these events occurs you will be prompted to Overwrite or Not, if you are not absolutely positive you want to overwrite you should choose No.

For more information contact Saltbush Software by phone or email.

Appendix A – Import Session File Format

The following section provides advanced information on the File format requirements for Importing a Session of EID's in the Crush Side recorder. If you require assistance with the Crush Side Recorder or Import File formats please contact Saltbush Support.

The Import File Format is comma delimited with optional (") text qualifiers. There is no restriction on the file extension. The file can contain column names in the first row but does not need to. If the file does contain column names in the first row the column selector will attempt to locate and assign the appropriate fields.

The file can contain many columns but will only recognise 3 (EID, Animal Tag, and Weight). There can only be one EID, Animal Tag and Weight field in a file.

EID's are required to have a space following the first 3 digits. This is how they are read directly from the reader device and how they are stored in HerdMASTER. There are situations where the EID may have been reformatted by another program or reader setting, in these cases we need to add the space either manually or by ticking the 'Add missing space to EID's'. If your EID's are missing the required space, this will cause problems later on when trying to match an animal based on EID and also when reporting NLIS movements etc.

The only required field is the EID, a file with simply an EID on each line will import successfully. EG

```
982 00000000011
982 00000000012
982 00000000013
982 00000000014
```

Saved in a file would import a session of 4 animals.

```
982 00000000011,AnimalTag1
982 00000000012,AnimalTag2
982 00000000013,AnimalTag3
982 00000000014,AnimalTag4
```

Saved in a file would import a session of 4 animals and attempt to associate the Animal Tag with the EID of the same line.

```
982 00000000011,AnimalTag1,687
982 00000000012,AnimalTag2,694
982 00000000013,AnimalTag3,634
982 00000000014,AnimalTag4,677
```

Saved in a file would import a session of 4 animals and attempt to associate the Animal Tag with the EID of the same line and automatically fill in the weight for each animal as it was "scanned".

The following will all import successfully and will all import the same animals and information.

```
"982 00000000011","AnimalTag1","687"
"982 00000000012","AnimalTag2","694"
"982 00000000013","AnimalTag3","634"
```

"982 00000000014","AnimalTag4","677"

Or

"982 00000000011","AnimalTag1",687

"982 00000000012","AnimalTag2",694

"982 00000000013","AnimalTag3",634

"982 00000000014","AnimalTag4",677

Or

982 00000000011,"AnimalTag1",687

982 00000000012,"AnimalTag2",694

982 00000000013,"AnimalTag3",634

982 00000000014,"AnimalTag4",677

Or

982 00000000011,AnimalTag1,687,Rib,8,EMA,3,Dox,12,13 April 2008,20%,0.0

982 00000000012,AnimalTag2,694,Rib,5,EMA,4,Dox,12,13 April 2008,22%,0.0

982 00000000013,AnimalTag3.634,Rib,8,EMA,5,Dox,12,13 April 2008,34%,0.0

982 00000000014,AnimalTag4.677,Rib,9,EMA,4,Dox,12,13 April 2008,42%,0.0

Or

AnimalTag1,687,Rib,8,EMA,3,Dox,12,982 00000000011, 13 April 2008,20%,0.0

AnimalTag2,694,Rib,5,EMA,4,Dox,12,982 00000000012, 13 April 2008,22%,0.0

AnimalTag3.634,Rib,8,EMA,5,Dox,12,982 00000000013, 13 April 2008,34%,0.0

AnimalTag4.677,Rib,9,EMA,4,Dox,12,982 00000000014, 13 April 2008,42%,0.0

As long as the file contains an EID per line, and uses commas to separate additional columns (if they exist) the file will load successfully. Just pick the column that contains the Animal Tag, EID, and Weight values on the column selector screen and everything will work. For more information contact Saltbush Software.

Saltbush Support Office

Toll Free from within Australia: 1-800-111-637

International +61 2 6773 3310

Web: <http://saltbush.une.edu.au>

Email: support@saltbush.une.edu.au