

DAYS TO CALVING IN HERDMASTER

Extracting BREEDPLAN Matings

The concept is that BREEDPLAN herds that wish to collect and submit the mating data for BREEDPLAN Days to Calving (DC) processing will do so on a whole herd basis.

Our advice to breeders is to submit the information at the end of the mating season (rather than progressively as the events occur).

The data that should be collected as “events” on a cow by cow basis are:

- Start and end mating dates
- Matings (AI, natural, observed, etc)
- Synchronisation events
- Embryo flush dates
- Embryo implant programs
- Pregnancy test results
- Extra events (eg shows, abortions, etc)
- Cow fates / disposals using specific BREEDPLAN codes (See below).

A cow will have multiple event records, some of which may occur on the same day. You need synchronisation date as well as AI date as some herds do not AI all the cows that were in the synchronisation program.

The idea is that cows are grouped together for mating. We need to identify which cows have been in the same mating program and what happened to them within that program. Both AI and natural matings are important. **All matings need to be recorded – not just the successful mating.** In particular all cows that were mated need to be recorded – whether they calve or not. All subsequent calves need to be recorded with the Society as well.

Ensure that you record details for all heifers joined – not just the ones that calve or are added to inventory. Information on heifers is very important as many herds cull heifers that do not conceive in the first year of joining. The heifers that do not calve supply as much information to the analysis as those that do calve.

Record the details of all joining events in which the female was involved even if you know the joining was unsuccessful. For situations where females are joined to several bulls in a mating season, record all joinings for each cow and heifer within the joining period, not just the first or successful joining.

Where bulls are run with the cows for extended periods, nominate the bull in date and bull out date for all the cows in the mob.

Where more than one mating program is conducted each year, simply record each mating program and just the cows involved in that mating program. This may mean that some cows may be in more than one mating program in a year. However, be sure to clearly define the end of one mating program and the start of the next.

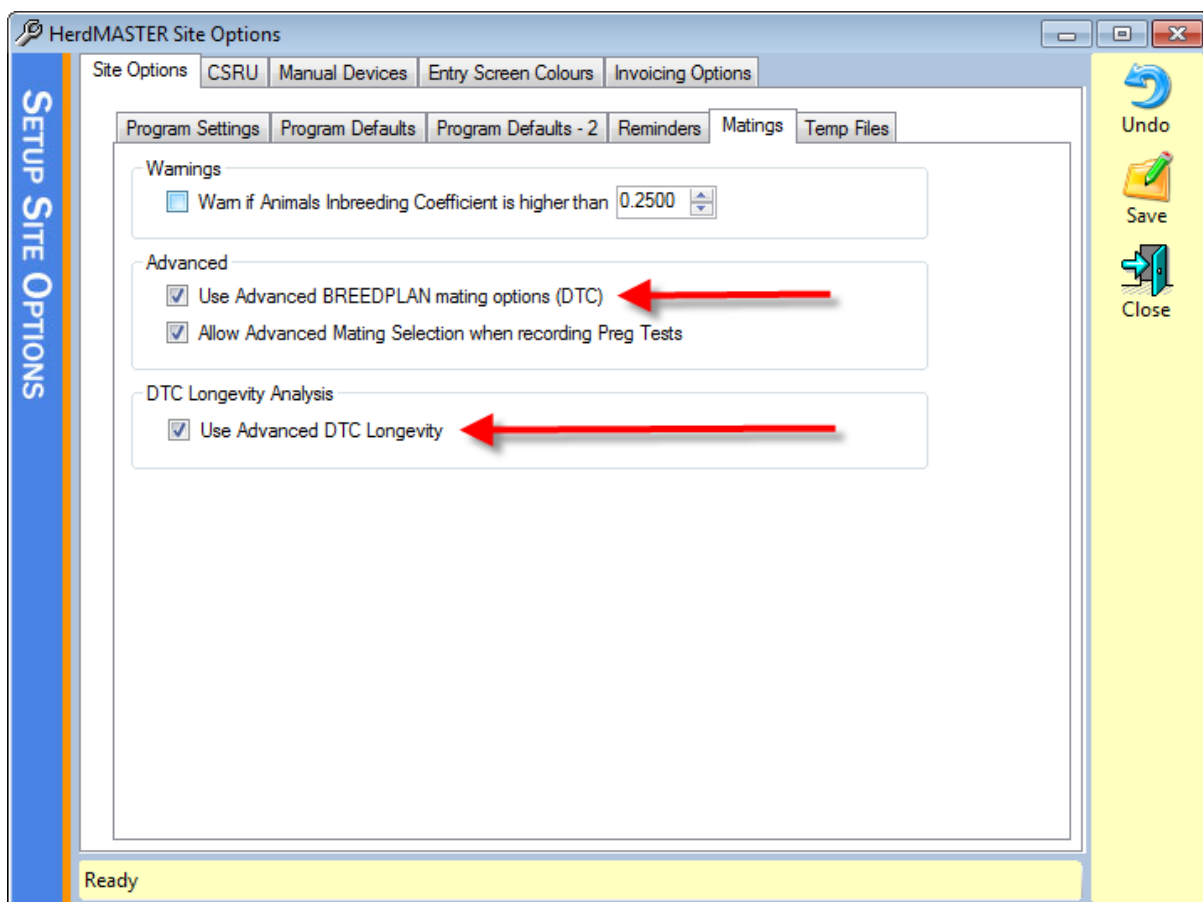
Record a management group for each separate mob of cows in the mating program(s). This will help define which cows can be fairly compared together. You may also need to identify any cow/s within a joining group whose fertility may have been affected either prior to, or during, the joining program due to non-genetic factors e.g. significantly different nutrition,

sickness, injury. A maximum of three characters (letters and/or numbers) can be used to describe each management group.

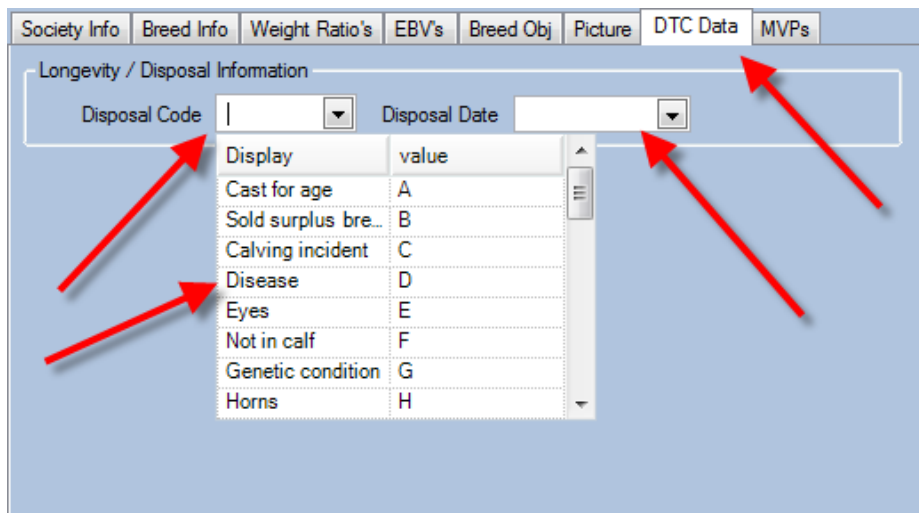
Accurately recording the fate/disposal codes of all females that leave the herd is extremely important. In the Days to Calving analysis, this fate/disposal code information is used to determine whether a female should be penalised for being “culled for infertility” or not penalised because she was culled for other reasons (eg. structure, performance etc.)

You can record the extended mating fates on animals in HerdMASTER. This option will only appear if you have told HerdMASTER that you want to record the DTC information for BREEDPLAN. To say you want to use the DTC information please follow the instructions below.

1. **Setup | Site Options** and choose the mating tab and check the box's that say you want to record DTC information. See picture below



2. When you have said that you want to record the DTC information you will get an extra tab in the animal details screen. In this tab you will be able to record the mating fates for animals and these fates will get extracted in the BREEDPLAN mating extract. See picture below to see where this tab will appear and what it will look like.



Here is a list of all the valid fates codes for BREEDPLAN DC that you will be able to record in the Disposal code on the DTC tab.

Culled or sold

- F not in calf (i.e. failed preg test or did not calve)
- A cast for age
- U udder or teat problems
- C calving incident
- D disease (e.g. pesti, eye cancer, etc)
- X susceptible to parasites (ticks, buffalo fly, worms, etc)
- G genetic condition (e.g. genetic carrier)
- V poor EBVs
- P poor performance (e.g. poor milking, low body condition, etc)
- S structural problem (e.g. feet, legs, navel, etc)
- T poor temperament
- H Horns
- E Eyes (pigment, hooding, etc)
- K Coat Type
- Q Appearance (type, colour, markings, Society standards, etc)
- R reproduction abnormality (eg freemartin, mal-formed uterus, small pelvic area, etc)
- W calved but failed to rear calf to weaning

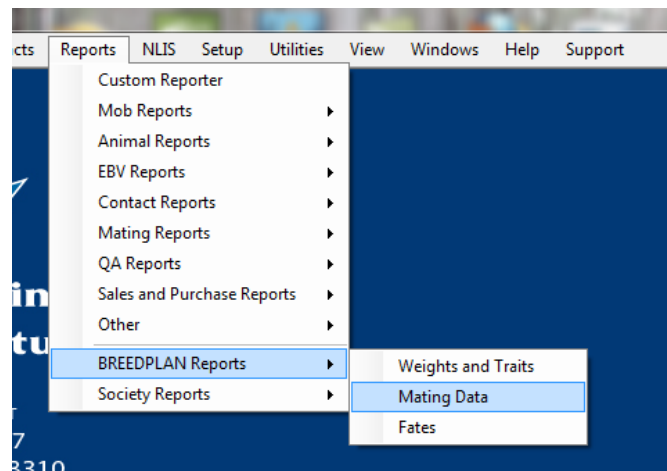
- J cull unjoined heifer surplus to requirements
- B sold surplus breeding female (e.g. donor cow, breeding cow) - but not code **J** or **F**

Died or missing

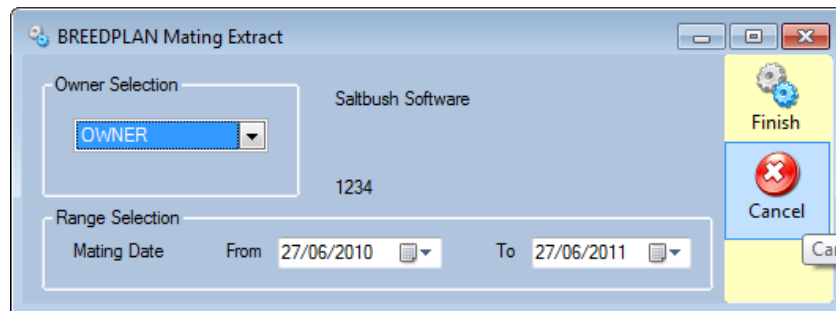
C	calving incident (e.g. dystocia, prolapsed)
D	disease (e.g. pesti, bloat, 3day, etc)
X	parasites (ticks, buffalo fly, worms, etc)
Z	accident (e.g. injury, drowned, poisoned, etc)
Y	unknown cause
M	missing assumed dead

To extract the DTC information and your mating information for BREEDPLAN please follow the instructions below.

1. Select reports | BREEDPLAN Reports | Mating data



You will now be presented with the following screen:



2. Choose the owner and select the date ranges for the matings you want to extract.
3. When you have entered the owner and mating data date ranges press the finish button and you will get the following report that you can Email to BREEDPLAN.

Quality Data Export

Print Save 1 of 1 Close

BREEDPLAN Quality Data Collection

Animal Tag	Society Ident	Event Code	Date of Event	Result
A				
140	23873180	A	14/04/2010	S
144	23846804	A	14/04/2010	S
6025	23930441	A	14/04/2010	
672	24003878	A	14/04/2010	
737	24053577	A	14/04/2010	
787	24050936	A	14/04/2010	
A57	23530450	A	14/04/2010	
F26	24023129	A	14/04/2010	
F66	24023138	A	14/04/2010	
G23	24023095	A	14/04/2010	
H30	42093891	A	14/04/2010	
H32	42093892	A	14/04/2010	
12 A				
D				
05	19169470	D	14/04/2011	10

To send data electronically via email press the envelope button and enter the email address you want to send it to.

Page 1 of 1

Note: You will also get a notification report that will list any issues with the matings before you send the information to BREEDPLAN.