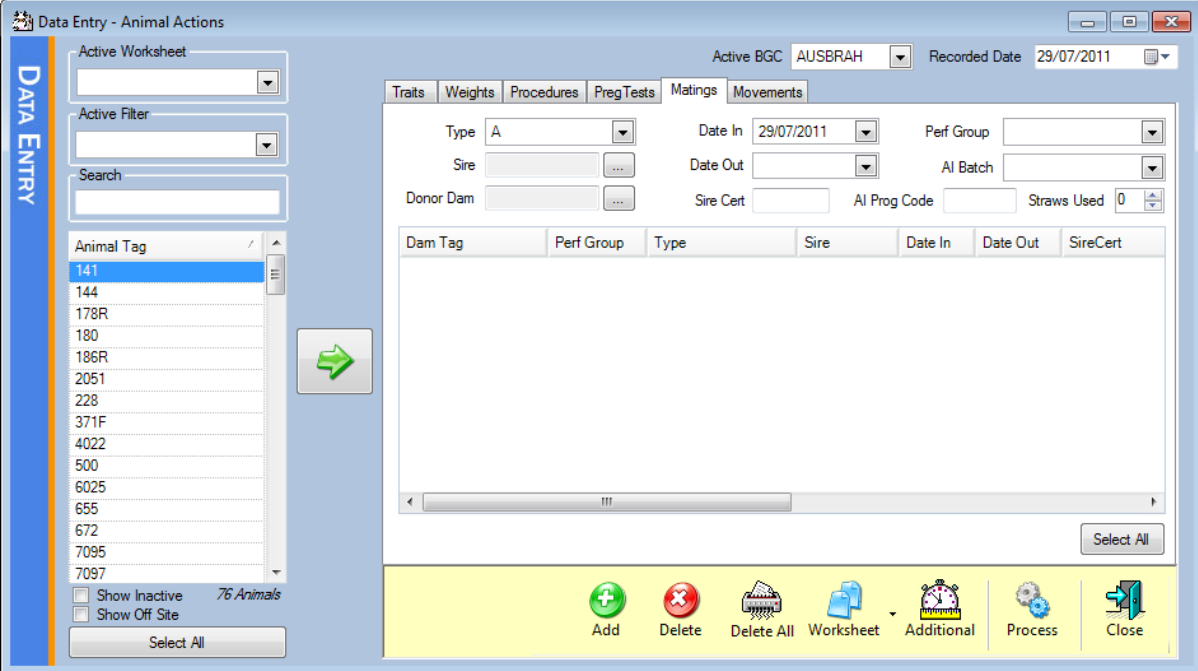


Recording Matings

To record matings please follow the steps below.

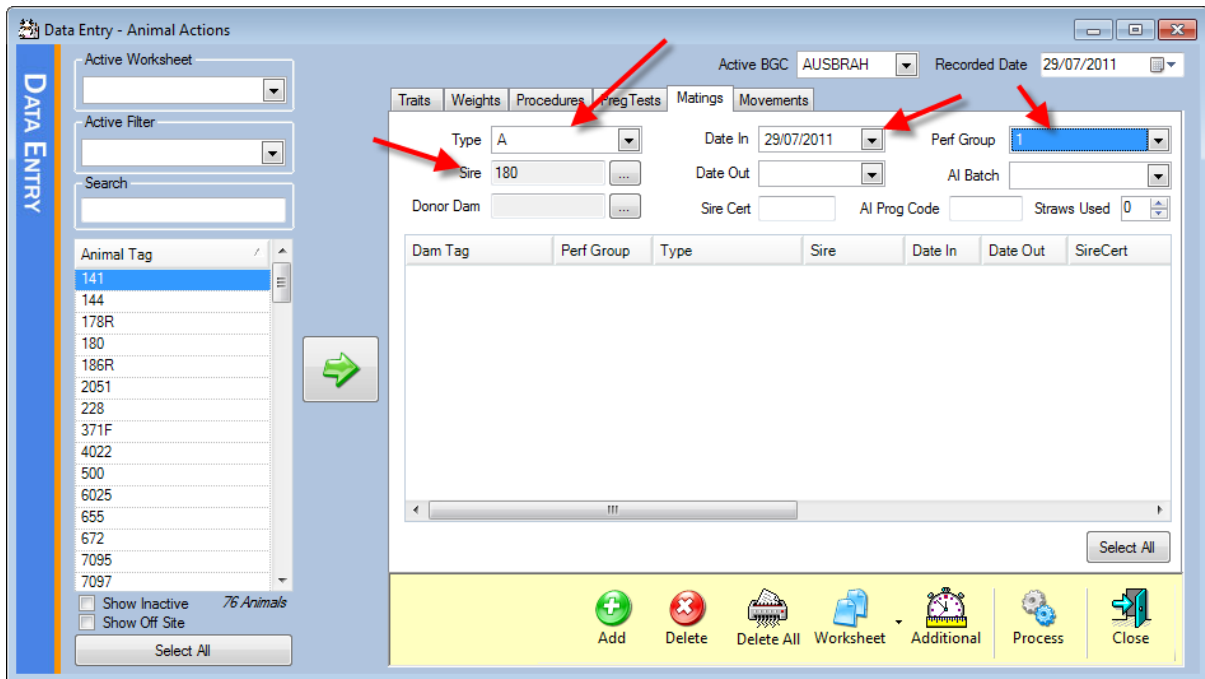
1. Select Data entry | Matings. You will then be presented with the following screen.



2. Select the mating type, the date in for the mating, the performance group for the mating if these matings are being sent to BREEDPLAN, the sire for the mating and date out or donor dam if required. Please see picture below for an example of the mating type codes that you can choose.

MatingType	Description
A	Insemination on...
E	Embryo transfer...
H	Hand or Observ...
I	Insemination on...
M	Mating Program...
N	Natural
P	Paddock
Z	Synchronisation


3. Once you have selected all the information to be recorded your screen should look like below.

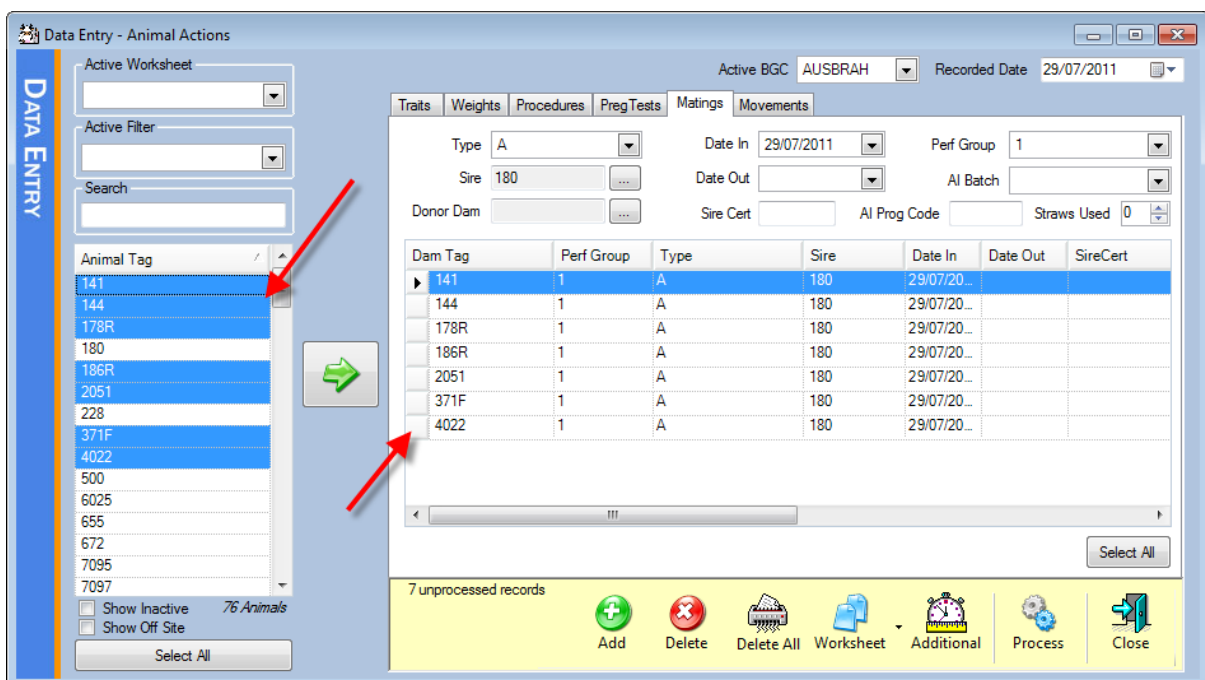


4. Once you have entered all the information you need to select the animals that you want to record the mating for. There are two different ways that you can choose animals. The first is

To select the animals with the mouse please choose them for the left hand side of the screen and

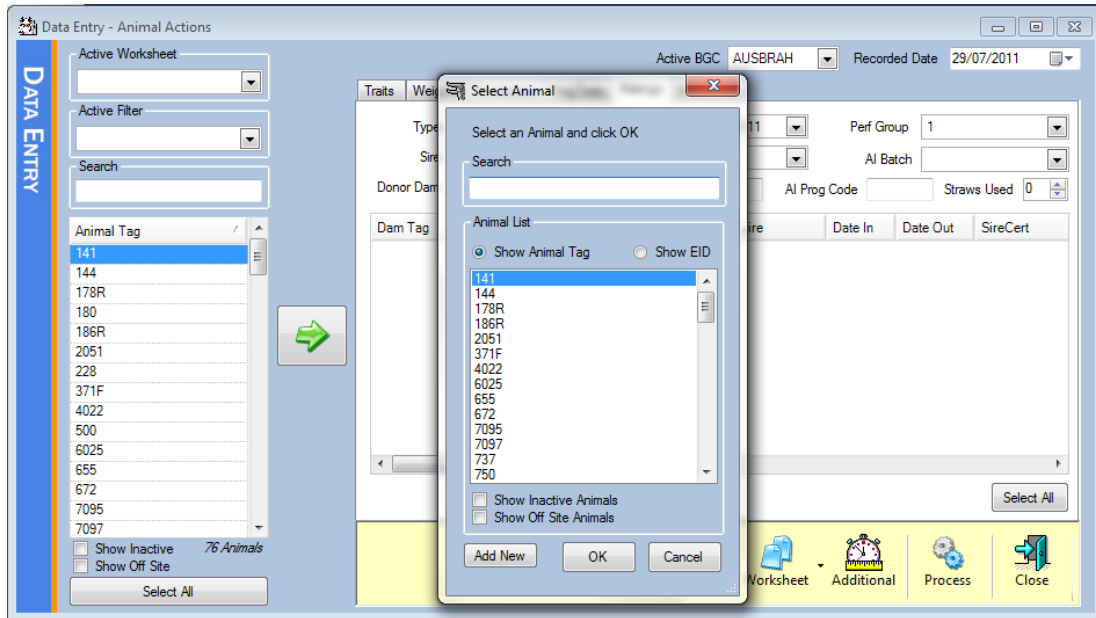


press the  to transfer the animals over to the right hand side of the screen. See picture below for example.

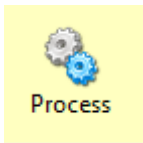




The second is to press the **Add** button. This will ask you to choose the animal you want to add and create a new line on the right hand side of the screen under the mating information you are about to record. See picture below as example.



5. Once you have entered the animals that you want to record the mating for press the



Process button. This will process the mating information and generate a report to let you know if there were any issues with the mating records. See example of report below.

